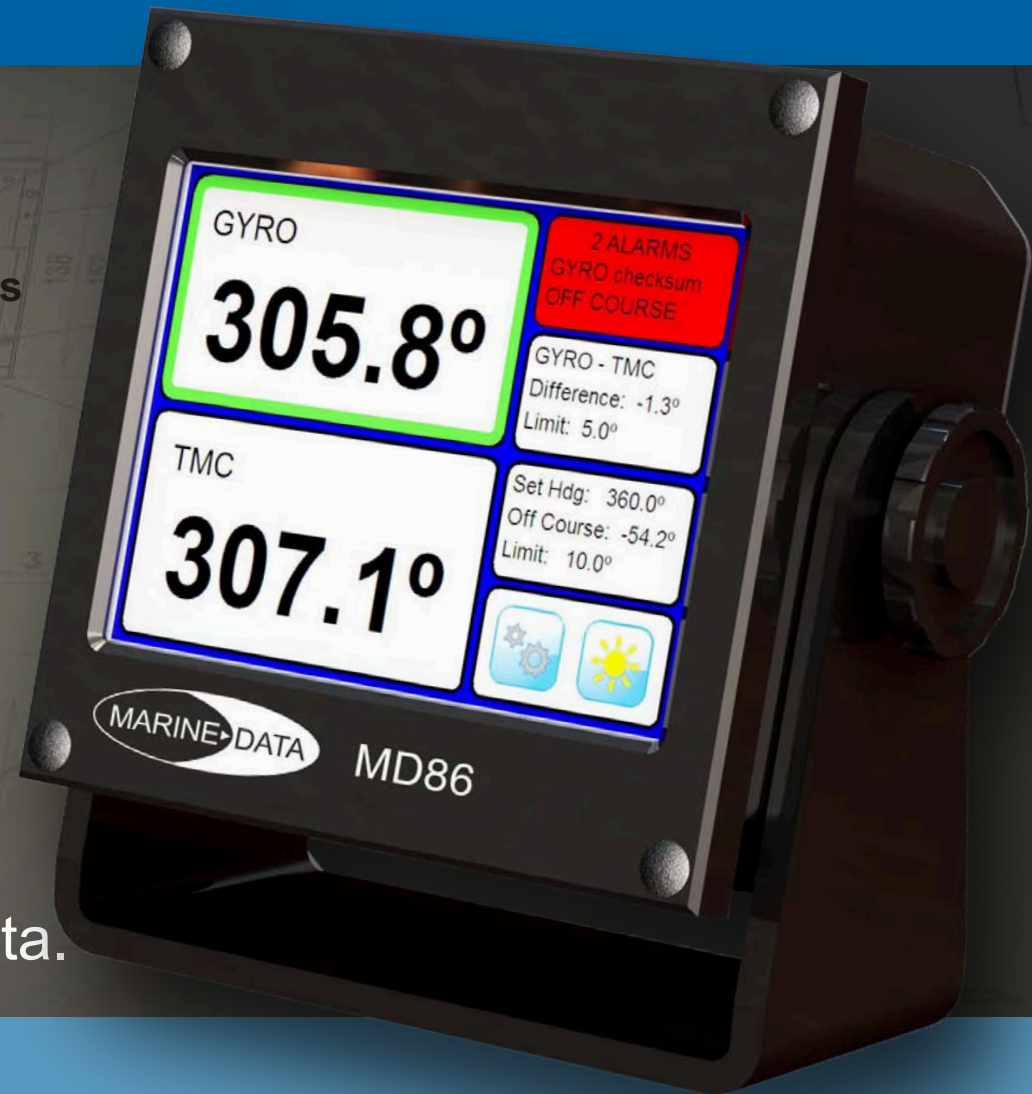


HEADING COMPARATOR UNIT (HCU)

MD86/8

- Automatically monitors and compares the headings of 2 digital compasses
- Up to four NMEA 0183 (HDT) heading inputs
- Up to four NMEA 0183 (HDT) heading outputs for compass repeaters and other equipment
- Meets the IMO requirement for comparing dual gyro-compasses
- Compass Divergence Alarm
- Heading Monitor (off-course) Alarm
- Touchscreen LCD display with graphical user interface
- Adjustable screen brightness for day & night operation
- Rugged, marinised construction



The MD86/8 HCU from Marine Data.

MARINE DATA

...navigation with innovation

SPECIFICATIONS

Physical

- Weight: 1.90kg
- Dimensions: Overall width 186mm; overall height 170mm (on brackets with fascia vertical); overall depth 109mm (on brackets with fascia vertical); fascia dimensions 144mm x 144mm
- Mounting: Panel mounted or bracket mounted
- Construction: Aluminium enclosure
- Finish: Stove enamel, black-grey (RAL7021)
- Connections: Internal connectors for RS422 data
- Cable gland to external terminal box for the following connections:
 - 4x Heading inputs; NMEA 0183 HDT from compass sensors
 - 4x Heading outputs; NMEA 0183 HDT (baud rate configurable)
 - 4x Normally Open (NO) external loop circuits for accessories
 - 1x 24V DC Power Supply In
 - 1x 24V DC Backup Power Supply In
 - 1x 24V DC Auxiliary Power Out (see Additional Information)

Electrical/Electronic

- Power Supply: 18-32V DC
- Data inputs: up to 4x RS422 NMEA 0183 heading data (HDT)
- Data output: up to 4x NMEA 0183 heading data (HDT) for remote digital compass repeaters and other marine equipment
- Data output baud rate is configurable for each channel
- Memory: 8GB Compact Flash®

Operational

- Alarm Conditions: Compass Divergence; Heading Monitor (off-course)
- Alarm Types: Local sounder; External circuit for remote alarm
- Cooling: Air cooled; 30mm fan
- Display: LCD touchscreen, 640 x 480 pixels, 115mm x 86mm, with graphical user interface (GUI)
- Adjustable display brightness

Environmental

- IP rating: IP54
- EN 60945
- Operating temperature: -10°C to +55°C

Additional Information

- Meets the IMO requirement for the mandatory comparison of dual gyro-compasses, where fitted
 - The HCU can compare and monitor the headings of any two compasses capable of providing a NMEA 0183 heading output (HDT). Compass types include:
 - Gyro-compass
 - Transmitting Magnetic Compass (TMC)
 - Electro-magnetic Compass (EMC) - a TMC equipped with an Earth's magnetic field sensor
- Auxiliary +24V power supply OUT is a secure power supply output for connection of critical system accessories. It is derived from either the main +24V power supply or the backup +24V power supply if the main +24V supply fails



...navigation with innovation

MARINE DATA, Vittlefields Technology Centre, Forest Road, NEWPORT, Isle of Wight, PO30 4LY, United Kingdom
tel: +44 (0)1983 822180 fax: +44 (0)1983 822181 email: sales@marine-data.co.uk web: www.marine-data.co.uk

MARINE DATA reserves the right to make changes to its products and specifications without notice. ©MARINE DATA 2010 ver02 rev01



MD86/8

MARINE DATA